

Key Factors for Successful Tag Retention

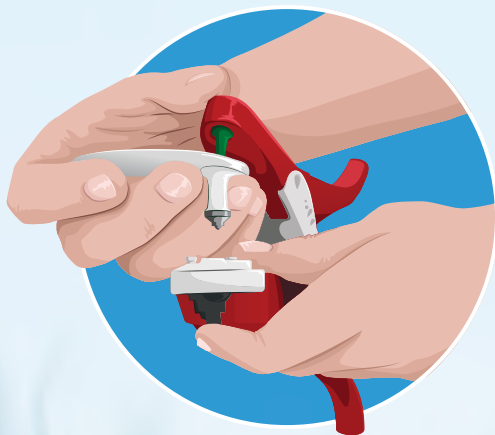


APPLICATION TIPS

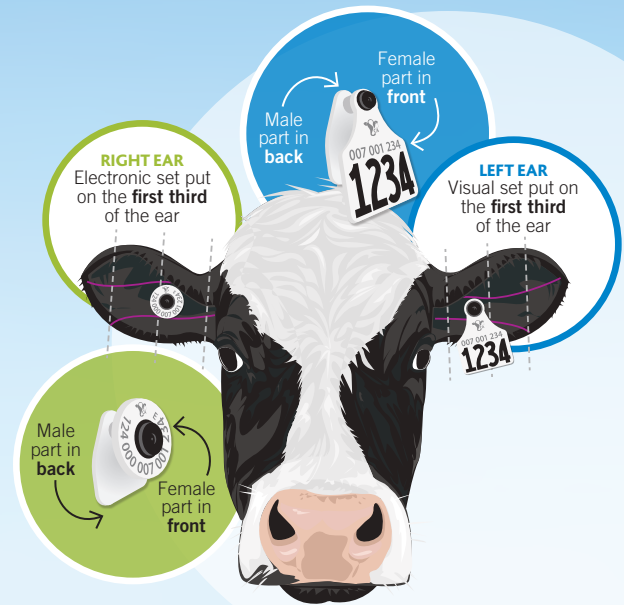
- Ensure the application areas of the ears are clean and dry.
- It is strongly recommended to disinfect the ears and/or the male portion of the tag prior to tagging to optimize healing.
- Properly handle the animal for safe application, regardless of age.

USE CORRECT APPLICATOR AND PIN

- Make sure your Allflex Red Total Tagger/applicator is in good condition. When you close the tagger, the pin goes straight between the jaws.
- Use the **green pin** for Ultraflex tags when fastening the tags together.
- Place the **male stem** over the green pin, rotate the front for ease of visibility to properly position the tag and tagger.
- Insert the **RFID button in the tagger**. The raised area (the part with black tamperproof cap) will face outward.
- Only apply enough pressure to hear the tag tip click into place in the cap, locking it into place. Tamperproof Ultra Cap™ provides ultimate security and retention.



TAG POSITIONING KEY FOR MAXIMUM RESULTS AND CONTINUOUS TAG ID



Farmers have discovered that taking more time and care with the initial placement of tags is critical to long-term tag retention, appearance, and program integrity.

- The female part (tag identifier with black centre) must be positioned in the front of the ear, where it is protected by the curvature of the ear.
- The **panel tag** (male part) with the metal point is placed in the rear, where it moulds with the ear.
- From the front, the identifiers are positioned within the first third of the ear from the head.
- Place the tags between the two principal veins and approximately one inch closer to the head than mid-point between the tip of the ear and head; in the slightly thicker part of the animal's ear.
- By placing the tags deep into the ear there is less chance of snagging the tag when positioned closer to the head.

Key Factors for Successful Tag Retention

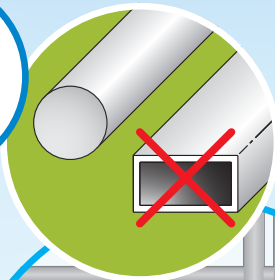


IF USING THE RFID XL PANEL SET

Apply the panel tag at birth and let the ear dry 24 hours before applying the RFID XL panel tag. It is a bit heavier than the button RFID tag and when the ear is wet and tender the tag may slip a bit during tagging and stretch the hole.

TAG TRAPS

Avoid animal access to **pen ends** of pipes.



Avoid **small gaps** where tags can get caught.



Avoid using **twine or rope** in areas where tags can get caught.

HOUSING FACILITIES

To reduce tag loss, ensure housing facilities and holding areas are snag-free. Rope, protruding nails, cuts/holes/overlays in metal sheeting, and any other catch or rub points should be eliminated to provide the best environment.

- Carefully examine facilities to look for catch areas.
- Remove objects that stick out such as nails, metal plates, open ends of pipes, damaged feeders, baler twine — all “tag traps”.

STORAGE OF TAGS

Protect tags from the weather. Tags can become damaged if kept too long in a place where there are significant changes in temperature.

TAKE-HOME MESSAGE

Taking more time and care with initial placement of tags is critical to long-term tag retention, appearance, and traceability.